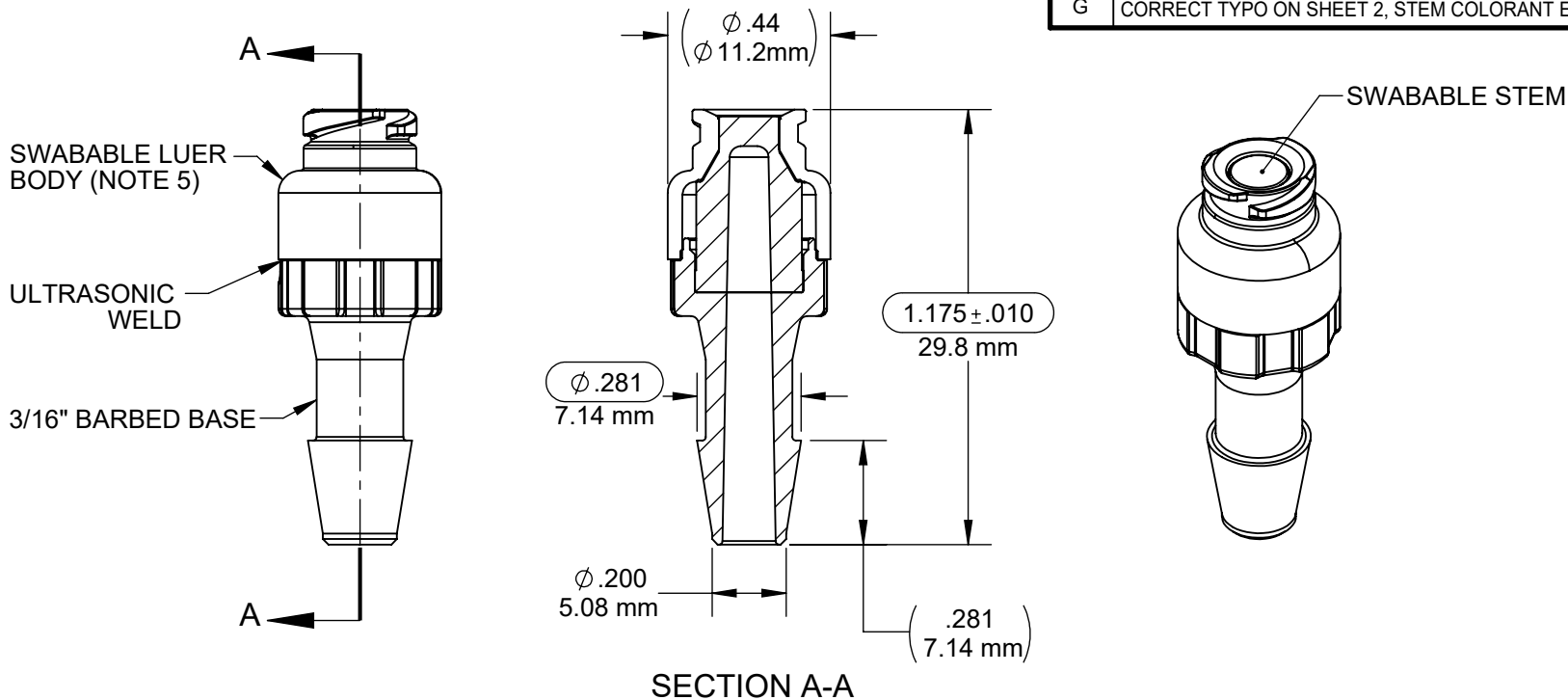


REV	DESCRIPTION (ECO)	DATE	APPROVED
F	ADD Ø.44 LUER CAP ECO 11753	07/11/22	SR
G	CORRECT TYPO ON SHEET 2, STEM COLORANT ECO 12324	09/14/23	SR



NOTES:

- SUFFIX "XXX" INDICATES MATERIAL:
024 - BLUE STEM, CLEAR POLYCARBONATE HOUSING
- CRITICAL DIMENSIONS CIRCLED AND SUBJECT TO INSPECTION
- DIMENSIONS IN PARENTHESIS FOR REFERENCE ONLY
- REFERENCE USAGE: UNIT WILL FIT 3/16" ID TUBING
- LUER COMPATIBLE WITH ISO594-2, AND ISO80369-7.

VALVE SPECIFICATION:

BACK PRESSURE: > 30 PSI (2.1 BAR), 40 PSI NOMINAL

BIOCOMPATABILITY: PASSES ISO 10993, PART 1

MATERIALS: ALL MATERIALS GAMMA RESISTENT, USP CLASS VI, DEHP FREE, AND NOT MADE WITH NATURAL RUBBER LATEX


STERILIZATION: ETO AND GAMMA BASED ON RAW MATERIAL SPECIFICATIONS

QUALITY CRITERIA
O.D. FLASH: 0.015 MAX (0.4mm)
GATE VESTIGE: 0.01 MAX (0.3mm)
EMBEDDED PARTICLES, BUBBLES, SPOTS, STAINS: 0.3mm ² MAX. NO MORE THAN 3 PER PART.

MOLDED PARTS:
GATES, PARTING LINES, AND FLASH PER QUALITY CRITERIA

PROPRIETARY AND CONFIDENTIAL

THE INFORMATION CONTAINED IN THIS DRAWING IS SOLE PROPERTY OF HALKEY-ROBERTS CORPORATION ST. PETERSBURG, FL. ANY REPRODUCTION IN PART OR AS A WHOLE WITHOUT THE WRITTEN PERMISSION OF HALKEY-ROBERTS CORPORATION IS PROHIBITED.

DRAWN BY	KJS	DATE	6/4/15
APPROVED BY	SR	DATE	
MATERIAL	SEE NOTE		
FINISH	N/A		
UNLESS OTHERWISE SPECIFIED: DIMENSIONS ARE IN INCHES TOLERANCES: ANGULAR: ± 1° TWO PLACE DECIMAL ± .01 THREE PLACE DECIMAL ± .005		THIRD ANGLE PROJECTION 	

HR® Halkey-Roberts®

TITLE

3/16" BARBED SWABABLE VALVE

SIZE

A

SCALE

2:1

DRAWING NO.

C245516XXX

DO NOT SCALE DRAWING

REV

G

SHEET

1 OF 2

SUFFIX "XXX"	LUER BODY	BARBED BASE	STEM
024	CLEAR POLYCARBONATE MAKROLON RX1805451118	CLEAR POLYCARBONATE MAKROLON RX1805451118	BLUE SILICONE 40 DUROMETER WACKER LR3003/40 DT COLOR, K75238

MOLDED PARTS:
GATES, PARTING LINES, AND FLASH PER QUALITY CRITERIA

PROPRIETARY AND CONFIDENTIAL
THE INFORMATION CONTAINED IN THIS DRAWING IS SOLE PROPERTY OF HALKEY-ROBERTS CORPORATION ST. PETERSBURG, FL. ANY REPRODUCTION IN PART OR AS A WHOLE WITHOUT THE WRITTEN PERMISSION OF HALKEY-ROBERTS CORPORATION IS PROHIBITED.

DRAWN BY KJS		DATE 6/4/15		<div style="font-size: 24pt; font-weight: bold;">HR® Halkey-Roberts®</div>		
APPROVED BY SR		DATE				
MATERIAL SEE NOTE						
FINISH N/A		THIRD ANGLE PROJECTION		TITLE 3/16" BARBED SWABABLE VALVE		
<small>UNLESS OTHERWISE SPECIFIED: DIMENSIONS ARE IN INCHES TOLERANCES: ANGULAR: ± 1° TWO PLACE DECIMAL ± .01 THREE PLACE DECIMAL ± .005</small>				SIZE A	DRAWING NO. C245516XXX	REV G
				SCALE 2:1		
				DO NOT SCALE DRAWING		
				SHEET 2 OF 2		